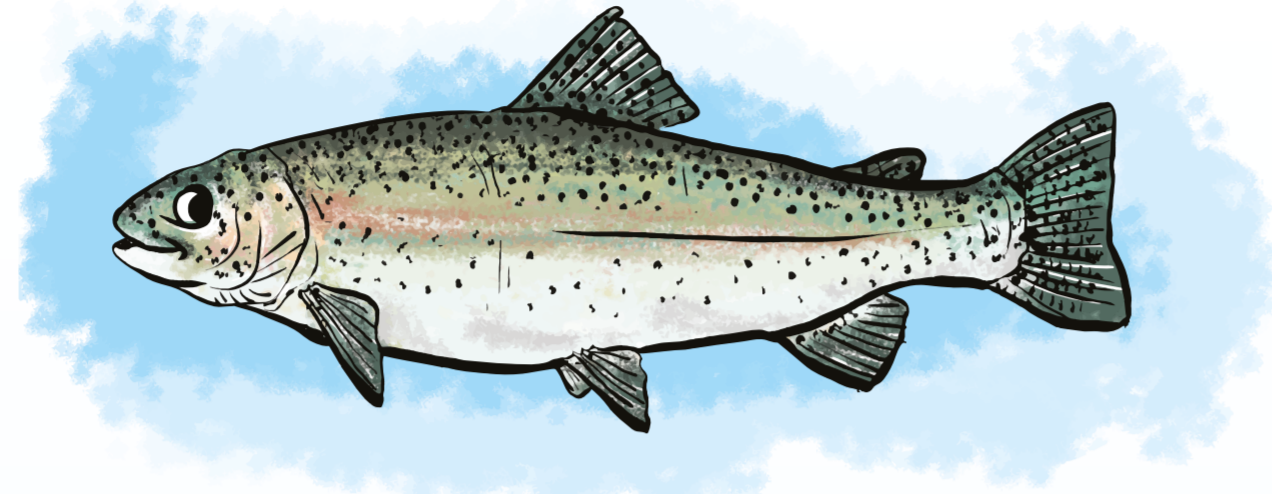
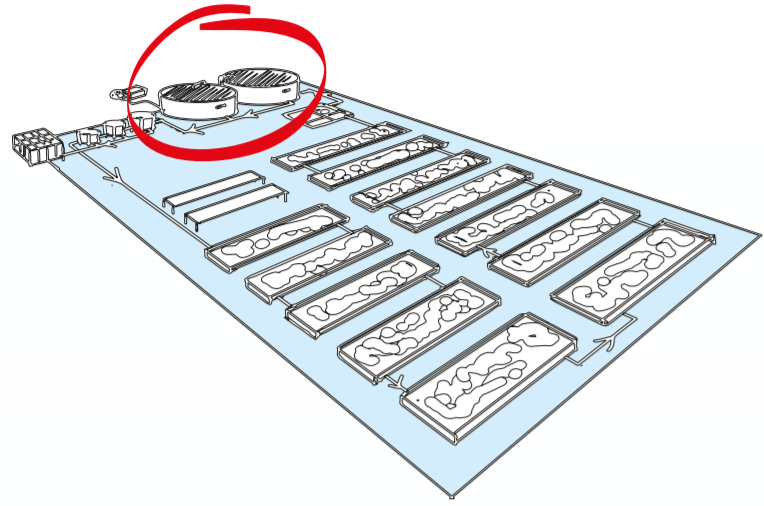


# Atelier Piscicole

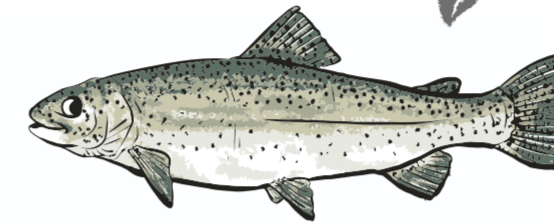


Truite Arc-en-ciel

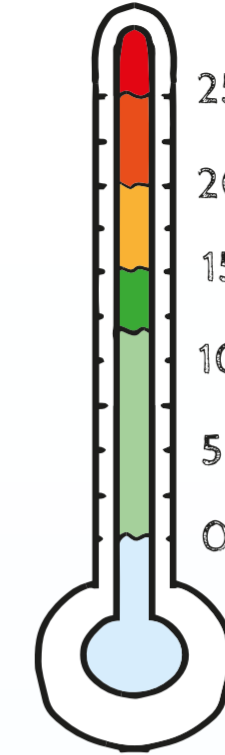
Truitelle  
(20 cm, 100 g)



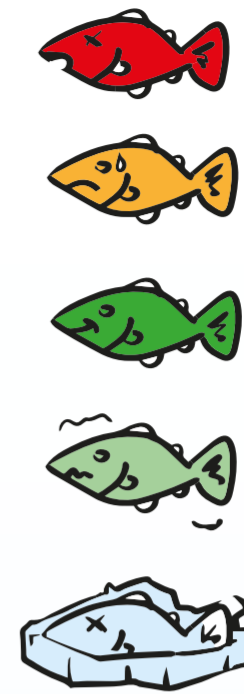
4 mois



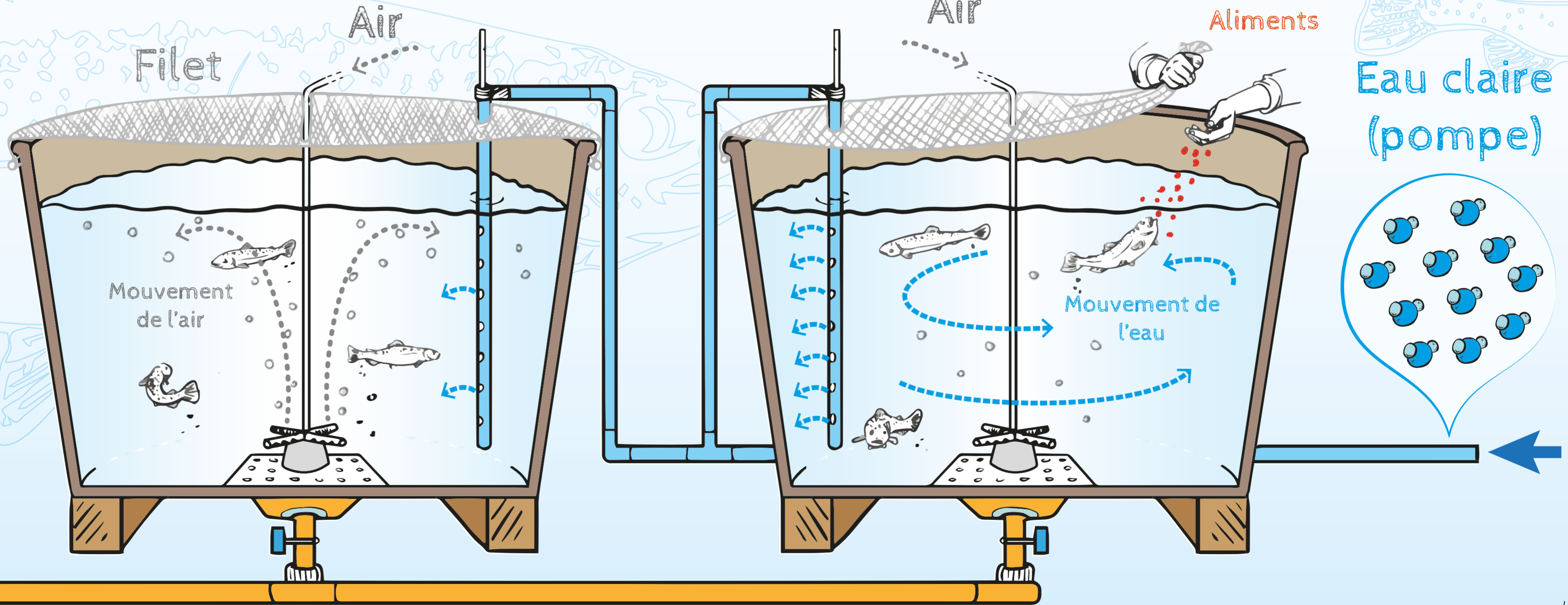
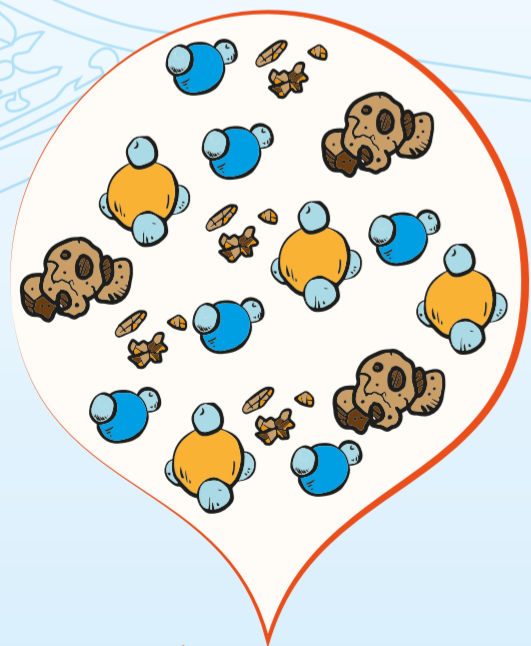
Truite  
(35 cm, 300 g)



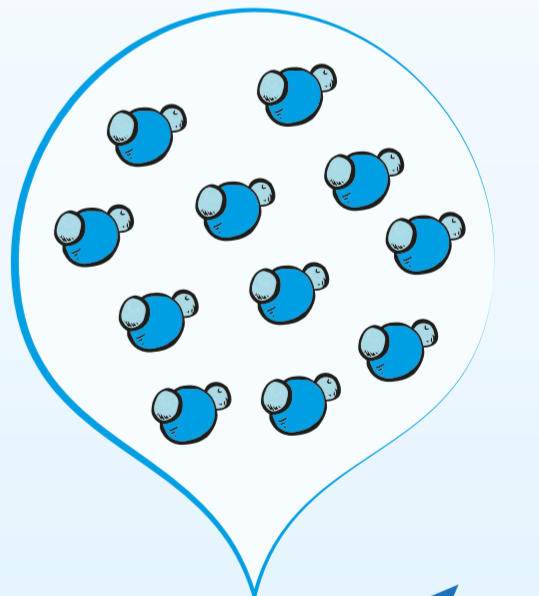
Température  
de l'eau : 12-15 °C



Eau chargée  
(vers filtres)



Eau claire  
(pompe)



- Déjections
- Particules
- H<sub>2</sub>O  
(Eau)
- NH<sub>4</sub> (Azote  
ammoniacal)

1 cuve = 3000 litres  
> 300 truites  
> 30 kg/m<sup>3</sup>